

# PRECISION

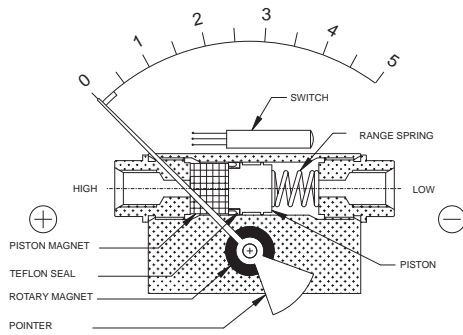
Differential Pressure Instruments



PRECISION Differential Pressure Instruments

# PRECISION Instruments

## LX Series Piston Gauge

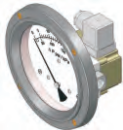


### COMBINATIONS

#### Gauge



#### Gauge+switch



### MOUNTING BRACKETS

#### Gauge



#### Gauge+switch



### LX 200 DPG

Range : 0 to 5 Psid up to 0-1000 Psid

### Specifications

Accuracy	±2% of the FSD (Ascending)
Migration	Minor from high to low port
Range	0-5 to 0-1000 Psid or equivalent range in other units
First marking on the scale	20% of FSD
Sensing element	Piston
Wetted parts	Body material, 302 SS spring, ceramic magnet & seals
Case material	Engineering polymer
Dial size	2.5" (square), 4.5" (round)
Mounting	Direct, front flange, 2" pipe & surface mounting
Maximum working pressure	200 bar for Aluminium & Brass, 400 bar for SS & Monel
Maximum process temperature	200° F
Body material	Aluminum, Brass, 316 SS & Monel
Seals	Buna-N, Viton & EPDM 'O' rings
Lens	Plexiglass
Connection	1/4" NPT(F) Std. Optional 1/4" BSP(F)
Porting	In-line, rear, bottom, in-line & bottom
Over range protection	Up to the max. working pressure from high & low side
Protection for gauge & switch	NEMA-4X/IP65

### Options

- Liquid filling
- Red follower pointer (liquid fill N/A)
- Customer logo
- Dual scale
- Colored arc
- Filter mesh in High Pressure Port
- Reverse port (pointer moves from right to left)
- Descending calibration
- NACE

### Switches (Adjustable in 20-100% of FSD)

- Nema 4X enclosure
- 1 or 2 SPSTs with a terminal strip
- 1 or 2 SPSTs with a built in relay
- 1 or 2 SPDTs with a terminal strip

Switch adjustment range 20-100% FSD

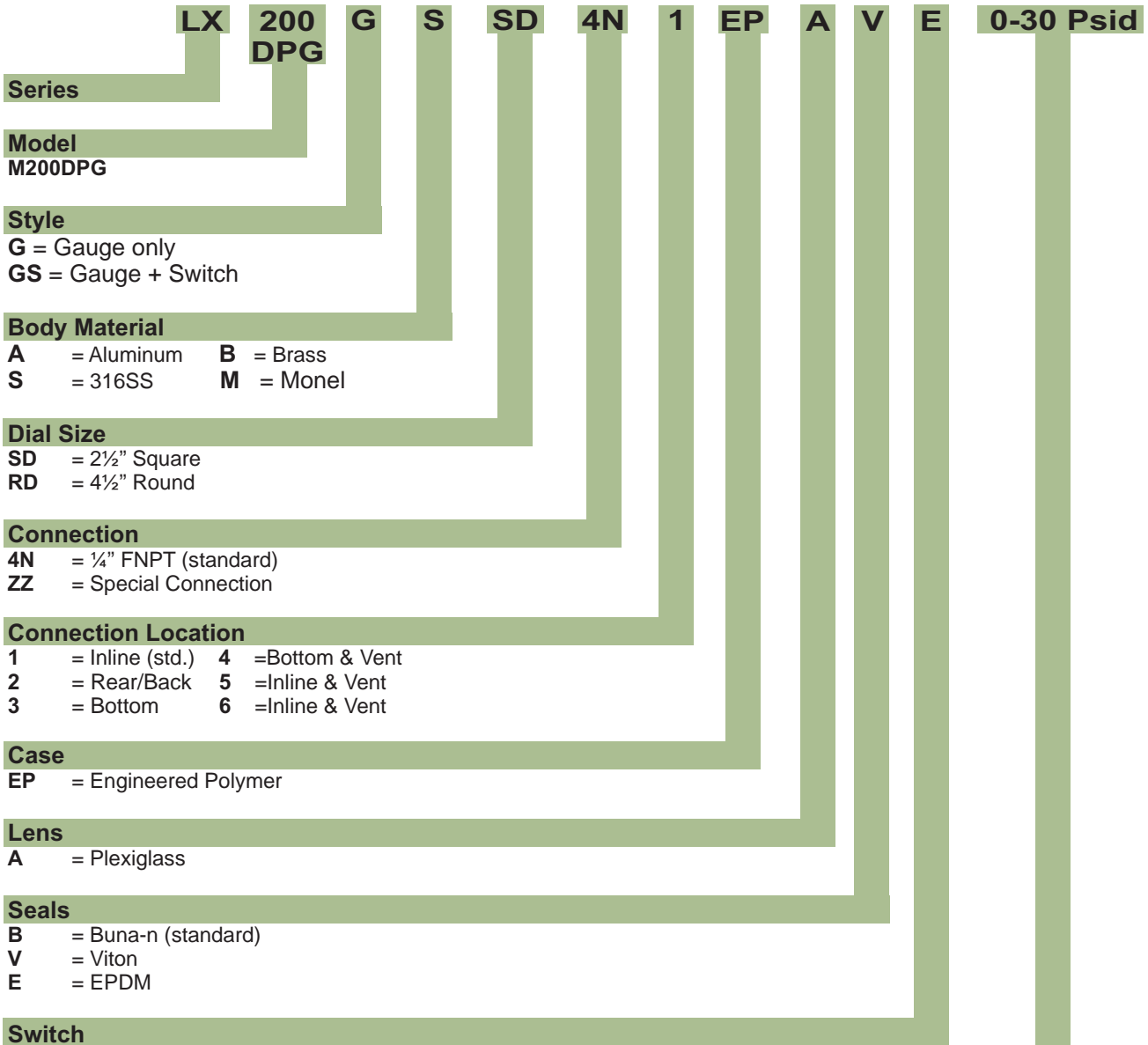


# PRECISION Instruments

## LX 200DPG Order Code

- Options

L X P R E C I S I O N G A U G E



**Switch**

SPDT Specifications		SPDT Specifications	
2	= 1 SPST w/terminal strip	1	= 10VA/100V/0.5 A (std)
2A	= 1 SPST w/relay	2	= 40VA/230V/1Amp
4	= 2 SPST w/terminal strip	3	= 100VA/300V/1Amp
4A	= 2 SPST w/relay	<b>+</b>	
SPDT Specifications		SPDT Specifications	
6	= 1 SPDT w/terminal strip	1	= 3VA/30V/0.3 Amp (std)
8	= 2 SPDT w/terminal strip	2	= 5VA/125V/0.25 Amp
		3	= 5VA/175V/0.25 Amp
		4	= 60VA/400V/1 Amp*

**Range**

PSID	Kg/cm <sup>2</sup>	Bar	Kpa	mbar
-	0.25	0.25	25	250
5	-	-	-	-
8	0.5	0.5	50	500
10	0.75	0.75	75	750
15	1	1	100	1000
20	-	-	-	-
25	1.6	1.6	160	-
30	2	2	200	-
-	2.5	2.5	250	-
40	3	3	300	-
50	3.5	3.5	350	-
60	4	4	400	-
-	5	5	500	-
80	-	-	-	-
-	6	6	600	-
100	7	7	700	-
-	9	8	900	-
150	10	10	1000	-

- 0 = None
  - A = Glycerine Fill\*\*
  - C = Customer Logo
  - D = Dual Scale
  - E = Colored Dial Arc
  - F = Filter Screen in + Port
  - G = Reverse Port+
  - H = Descending calibration
  - N = NACE
  - S = Silicone Fill\*\*
  - I = Oxygen Clean
  - K = 6000 Psig MAWP
  - M1 = 2" Horizontal Pipe Mount
  - M2 = Surface Mount Bracket
  - M3 = 2" Vertical Pipe Mount
- Notes
- \* = Switch Factory Set Only
  - \*\* = Affects Accuracy
  - + = Pointer moves right to left



Contact Information



Dynamic Controls & Sensors, Inc.

Postal Address

Physical Address

P.O.Box 5009

1515 Lakeville Dr., Suite D

Kingwood, TX 77325

Kingwood, TX 77339

voice: 281-812-9844 Fax: 281-812-9845

[www.precisionvalves.net](http://www.precisionvalves.net)

[sales@precisionvalves.net](mailto:sales@precisionvalves.net)