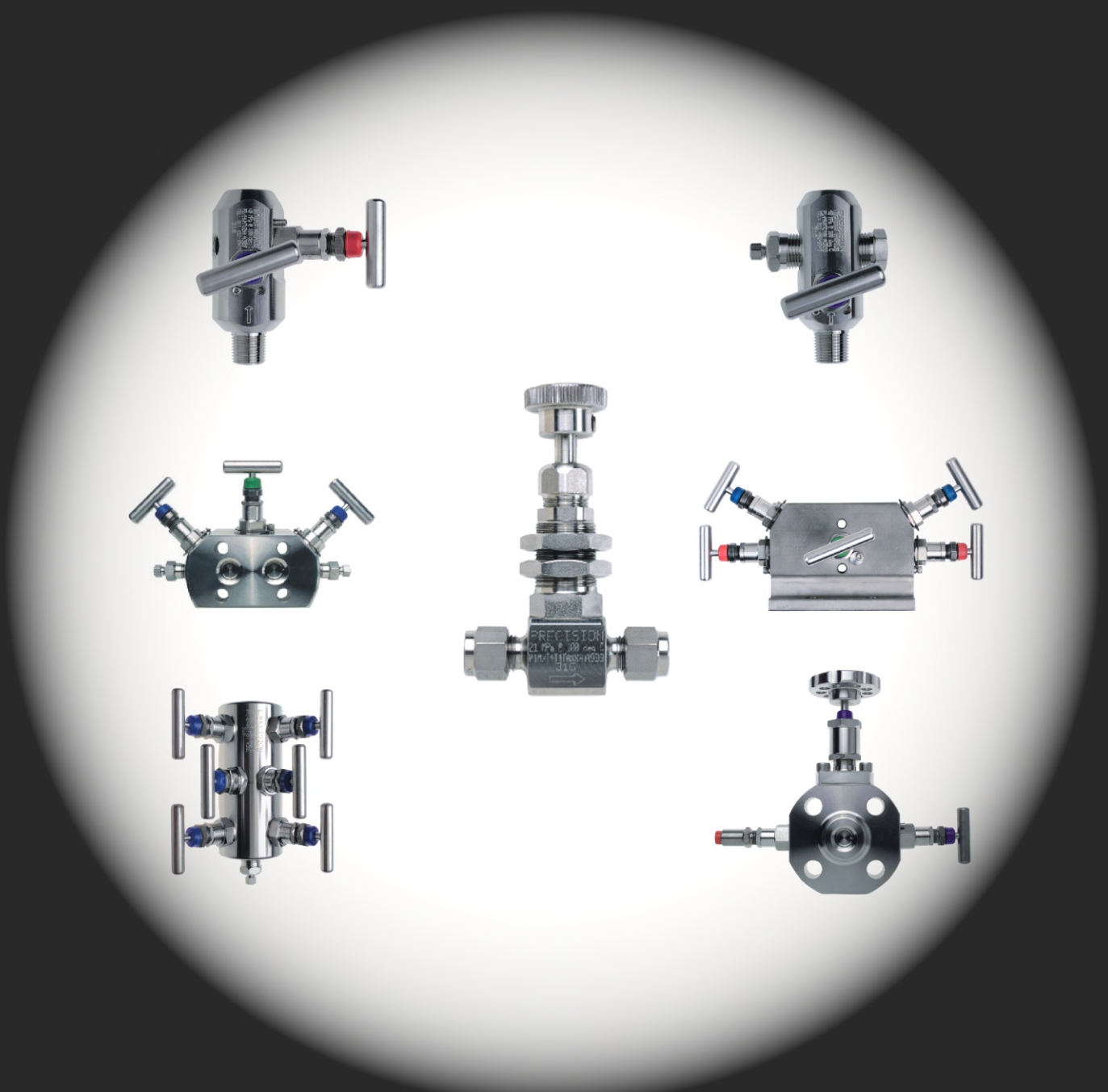


# PRECISION Instrument Manifolds



PRECISION Instrument Manifold & Valves  
"The New Standard"

# PRECISION Instrument Manifolds

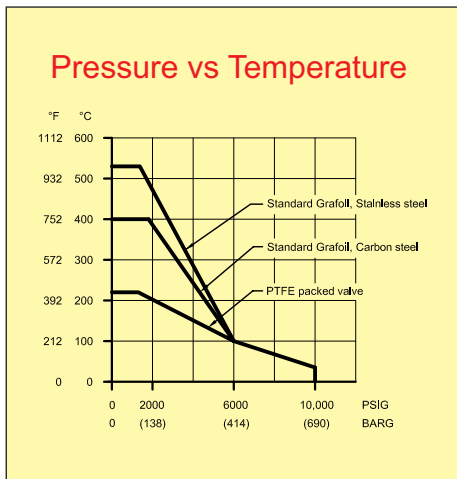
## Process Valve Series

PRECISION Process Valve Series provide the ideal solution for compact one piece Root Valves. PRECISION Process Valves comply with plant piping codes.

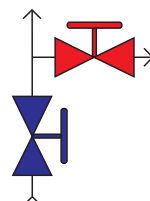
Built with our unmatched ruggedness, all of our Process Valves feature 6,000 PSIG working pressure with 4:1 over pressure protection. Designed to replace the typical stack-up found in ad-hoc installations, the PRECISION Process Valve Series simplifies BOMs and installations, reduces leak paths and saves weight, space and cost.

Size Code in Inches

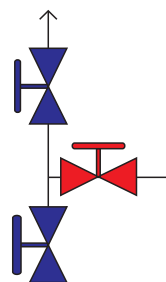
- 1 = 1/8"
- 2 = 1/4"
- 3 = 3/8"
- 4 = 1/2"
- 5 = 5/8"
- 6 = 3/4"
- 7 = 7/8"
- 8 = 1"
- 16 = 2"



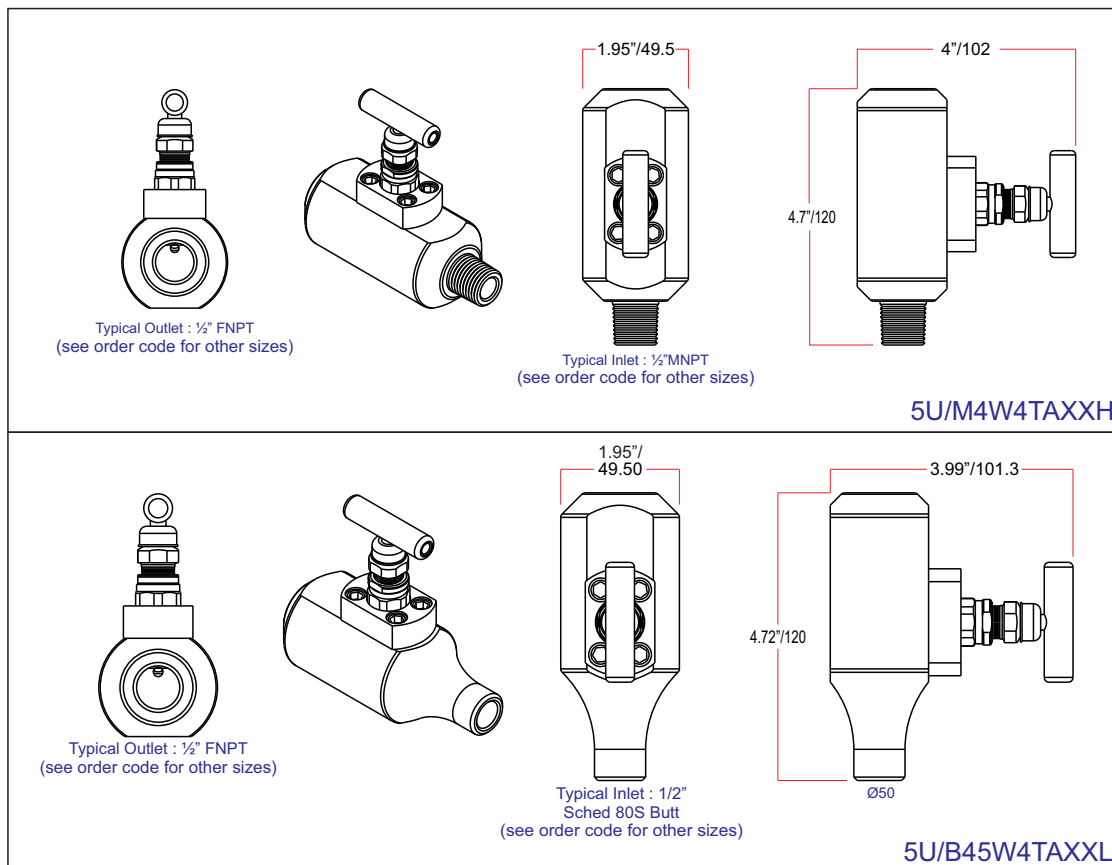
**Block Valve Logic Diagram**



**SBB Single Block & Bleed Logic Diagram**



**DBB Double Block & Bleed Logic Diagram**



Connections are Client Selectable - Welded or Screwed

**Weld Codes**

B	=	Butt Weld
S	=	Socket Weld
1	=	Sched 5S
2	=	Sched 10S
3	=	Sched 40S
5	=	Sched 80S
7	=	Sched 160
9	=	Sched XXS

PROCESS VALVES

# PRECISION Instrument Manifolds

## Process Valve Series

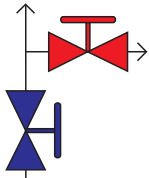
Connections are Client Selectable

Size Code in Inches

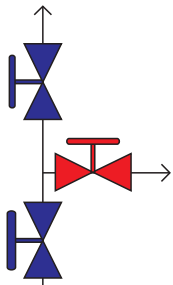
- 1 = 1/8"
- 2 = 1/4"
- 3 = 3/8"
- 4 = 1/2"
- 5 = 5/8"
- 6 = 3/4"
- 7 = 7/8"
- 8 = 1"
- 16 = 2"



Block Valve  
Logic Diagram



SBB  
Single Block & Bleed  
Logic Diagram



DBB  
Double Block & Bleed  
Logic Diagram

**Weld Codes**

- B = Butt Weld
- S = Socket Weld
- 1 = Sched 5S
- 2 = Sched 10S
- 3 = Sched 40S
- 5 = Sched 80S
- 7 = Sched 160
- 9 = Sched XXS

<p>Inlet 3/4" MNPT Outlet 1/2" FNPT Vent 1/4" FNPT</p> <p style="text-align: right;">4.2"</p> <p style="text-align: center;">6.7"</p> <p style="text-align: center;">5D/M6W4TV2XH</p>	<p>Inlet 1/2" Sched 160 Butt Outlet 1/2" FNPT Vent 1/4" FNPT</p> <p style="text-align: right;">5.1"</p> <p style="text-align: center;">6.7"</p> <p style="text-align: center;">7SP/B47W4TV4VH</p>
<p>Inlet 3/4" Sched 80 Butt Outlet 1/2" FNPT Vent 1/4" FNPT</p> <p style="text-align: right;">4.6"</p> <p style="text-align: center;">6.85"</p> <p style="text-align: center;">7D/B65W4TV4VH</p>	<p>Inlet 3/4" Sched XXS Butt Outlet 1/2" FNPT Vent 1/4" FNPT</p> <p style="text-align: right;">6"</p> <p style="text-align: center;">7.8"</p> <p style="text-align: center;">7DP/B69W4TV4VH</p>

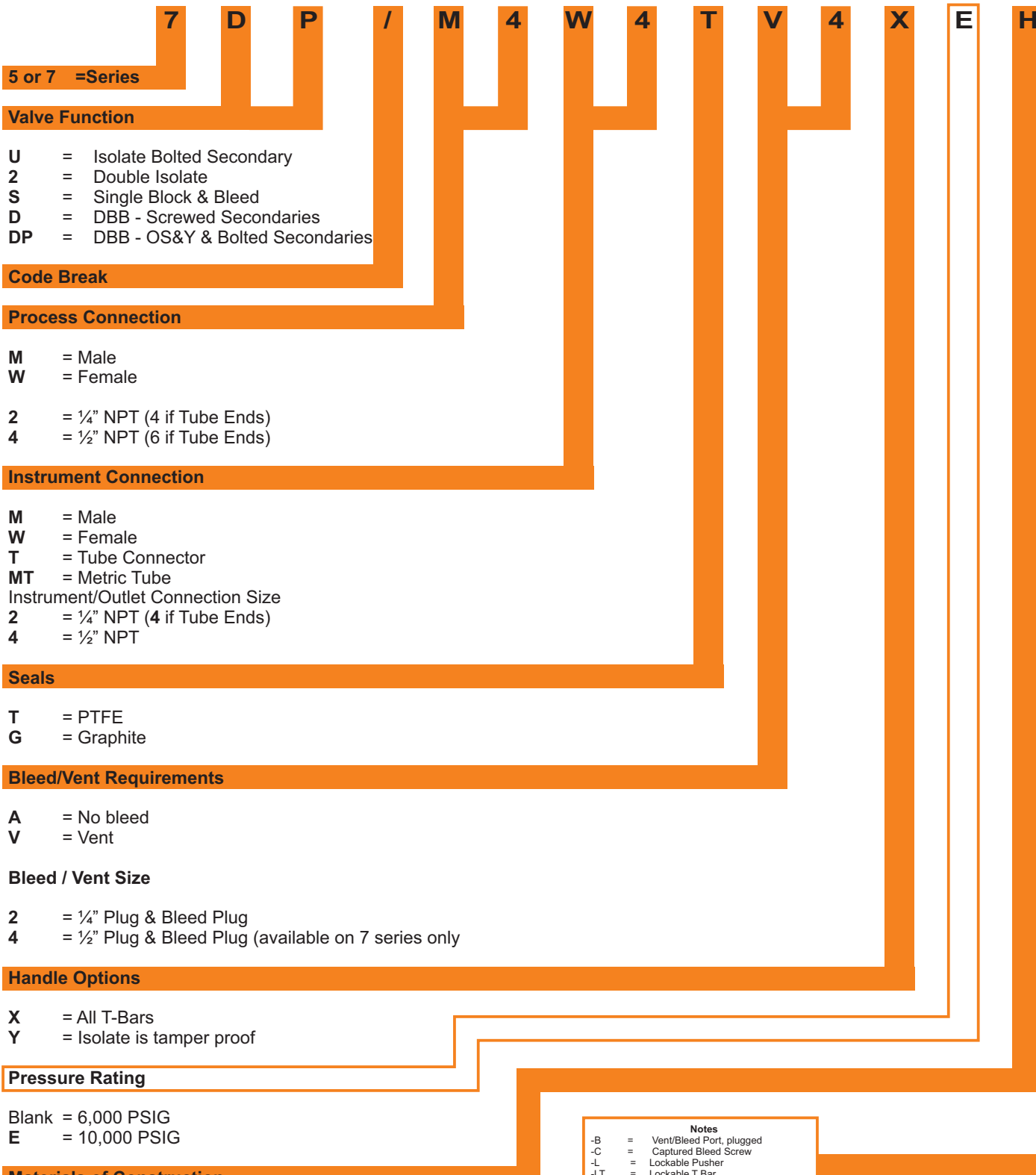
PROCESS VALVES

# PRECISION Instrument Manifolds

## Process Valve Series

PROCESS VALVES

- Options



5 or 7 =Series

**Valve Function**

- U = Isolate Bolted Secondary
- 2 = Double Isolate
- S = Single Block & Bleed
- D = DBB - Screwed Secondaries
- DP = DBB - OS&Y & Bolted Secondaries

**Code Break**

**Process Connection**

- M = Male
- W = Female
- 2 = 1/4" NPT (4 if Tube Ends)
- 4 = 1/2" NPT (6 if Tube Ends)

**Instrument Connection**

- M = Male
- W = Female
- T = Tube Connector
- MT = Metric Tube
- Instrument/Outlet Connection Size
- 2 = 1/4" NPT (4 if Tube Ends)
- 4 = 1/2" NPT

**Seals**

- T = PTFE
- G = Graphite

**Bleed/Vent Requirements**

- A = No bleed
- V = Vent

**Bleed / Vent Size**

- 2 = 1/4" Plug & Bleed Plug
- 4 = 1/2" Plug & Bleed Plug (available on 7 series only)

**Handle Options**

- X = All T-Bars
- Y = Isolate is tamper proof

**Pressure Rating**

- Blank = 6,000 PSIG
- E = 10,000 PSIG

**Materials of Construction**

- H = 316
- Z = Inconel
- L = 316L
- K = Carbon Steel
- J = Monel 400

Notes	
-B	= Vent/Bleed Port, plugged
-C	= Captured Bleed Screw
-L	= Lockable Pusher
-LT	= Lockable T Bar
-OX	= Oxygen Clean
-Q	= Bleed Plug in Vent/Bleed port
-R	= Bottom mounting (M6 X14)
-U	= Upstream Venting
-50	= Inlet extension adder
-66	= Inlet extension adder
-79	= Inlet extension adder
-100	= Inlet extension adder
<b>Shaft</b>	
-M	= Metering Trim
-J	= Monel 400
-I	= Incoloy



Contact Information



Dynamic Controls & Sensors, Inc.

Postal Address

Physical Address

P.O.Box 5009

1515 Lakeville Dr., Suite C

Kingwood, TX 77325

Kingwood, TX 77339

voice: 281-812-9844 Fax: 281-812-9845

[www.precisionvalves.net](http://www.precisionvalves.net)

[sales@precisionvalves.net](mailto:sales@precisionvalves.net)