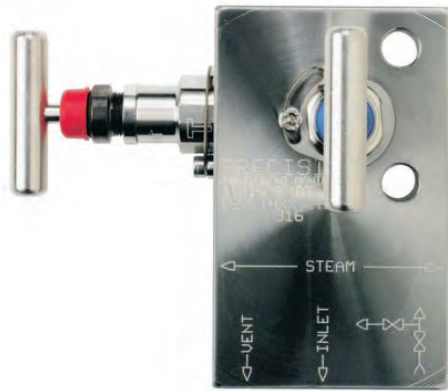


PRECISION Instrument Manifolds

Transmitter Manifolds mounted in Hard Enclosures

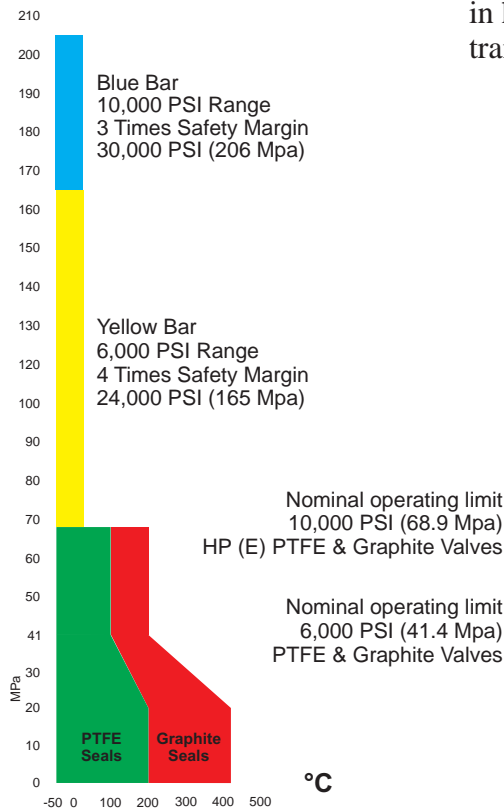
The PRECISION 'L' Series manifolds are manufactured for applications that require the transmitter to be mounted in an enclosure for environmental protection. Although our standard transmitter manifolds will work, the 'L' series is designed to save space and to simplify the mounting of the transmitter in the enclosure. Additionally, the 'L' series presents the valve handles for easy operation of the valves. Process connections, vent outlets and mounting taps are all oriented out the bottom of the manifold, and out the bottom of the enclosure to simplify piping as well.



P5/L



P5/ L style manifold in hard enclosure with transmitter mounted

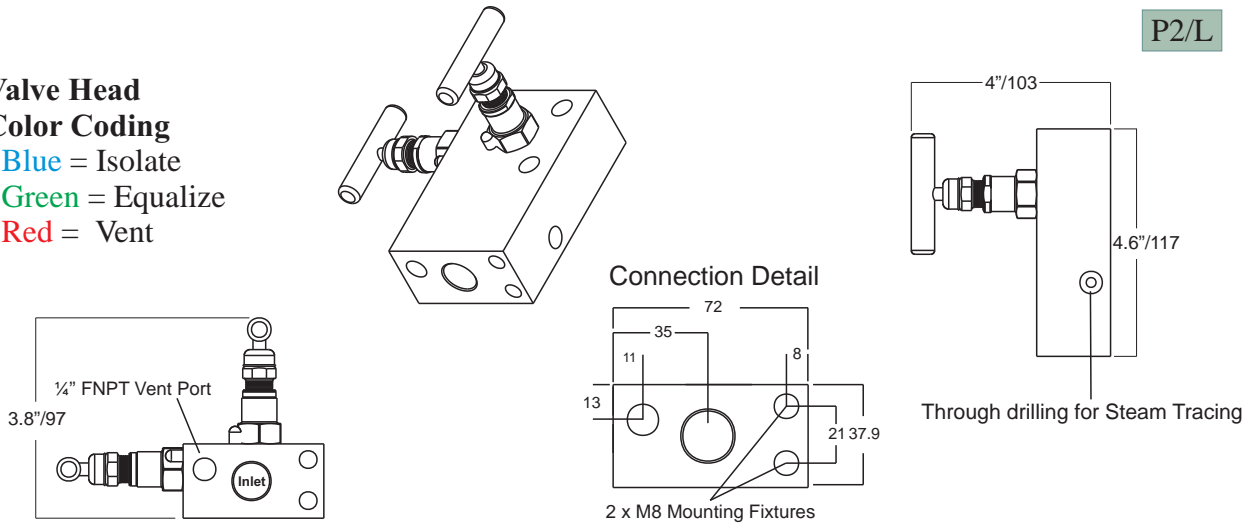


PRECISION Instrument Manifolds

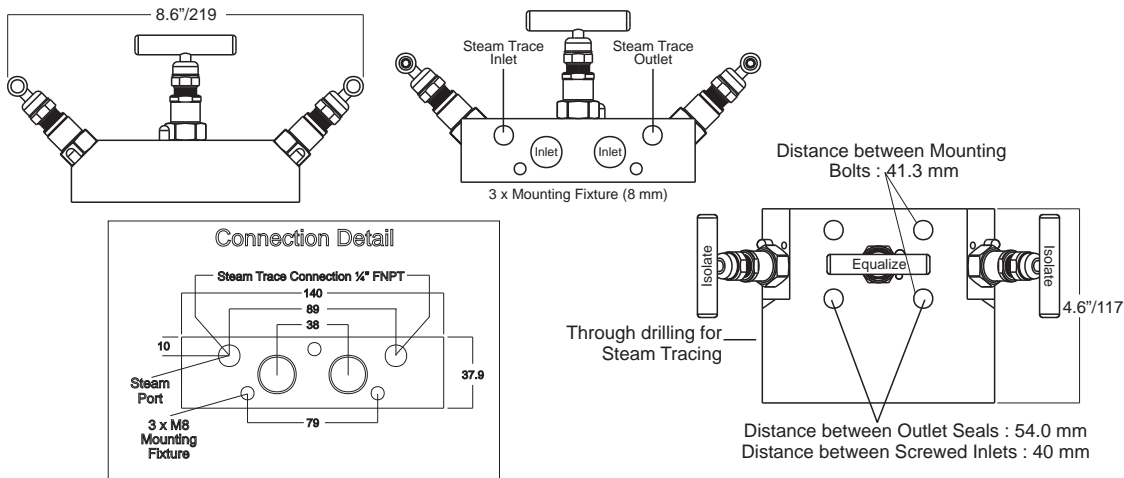
Transmitter Manifolds Dimensions for Transmitters Mounted in Hard Enclosures

Valve Head Color Coding
 Blue = Isolate
 Green = Equalize
 Red = Vent

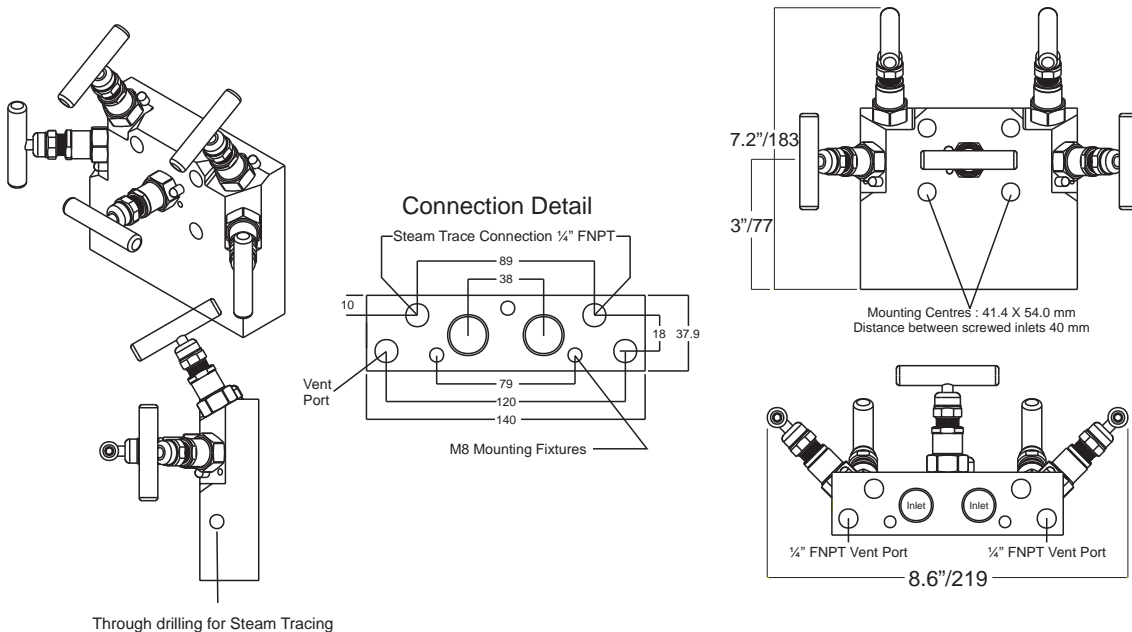
P2/L



P3/L



P5/L



Through drilling for Steam Tracing

PRECISION Instrument Manifolds

Transmitter Manifold Selection Chart

P 3 / T T H X X - Options

P for PRECISION or

S for Square stock body

Manifold Type

- 2 = 2 Valve Manifold
- 3 = 3 Valve Manifold
- 5 = 5 Valve Manifold

Code Break

Manifold Type

- T = T Bar NPT inlet by Xmitter Flange
- H = H Bar, Flanged inlet/outlet, inlet/process connection is 1/2" FNPT
- HK = H Bar, Flanged inlet/outlet, futball inlet
- F = Flat Pack NPT inlet by Xmitter Flange
- C = Flatpack NPT inlet by Xmitter Flange³
- D = Flatpack NPT inlet by Xmitter Flange⁴
- S = Flat Pack NPT inlet by Xmitter Flange only flatpack w/-Q available as option
- L = Enclosure Mount

Seal/Packing Material

- T = TFE
- G = Graphite

Materials of Construction

- H = 316SS
- L = 316L SS for NACE
- J = Monel 400
- Z = Inconel 718
- K = Carbon Steel
- C = H-C 276

Handle Options

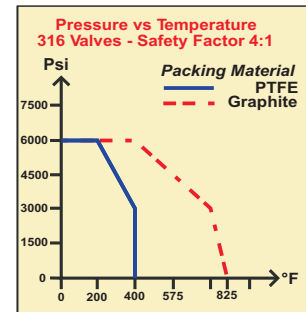
- X = All are T bars
- A = Equalize is Tamper Resistant
- V = Vent is Tamper Resistant
- U = Equalize & Vent are Tamper Resistant
- B = All are Tamper Resistant

Transmitter Connection Options

- X = Flanged outlet 41.3 x 54.0 mm 'Traditional mount'
- M = Flanged outlet coplanar

Options - Must be placed at end of part number

- F = Front mounting holes (M8 x 14) (see note 1)
- R = Bottom mounting holes (M8 x 14) (see note 1)
- D = Plated Transmitter Bolts
- Z = Graded Transmitter Bolts
- P = Plugs in bleed or vent ports (blank plugs) (see note 2)
- Q = Bleed Plugs in bleed or vent ports (see note 2)
- O = Mounting to order
- J = Monel 400 trim (may be long lead)
- OX = Oxygen Clean



Example - P3/FTHXX-D-F-B-OX (Codes in the first half of P/N ARE position sensitive)

- P3/F Precision 3 way Flat Pack, Large body, 1/2" FNPT Process
- O'-Ring Transmitter Connection
- T Teflon seals throughout (200 Deg. F)
- H 316 SS, includes trim
- X The handles are all 'T' bars
- X Flanged outlet (41.3 x 54 mm spacing, industry standard)

Options

- D Plated Transmitter mounting bolts
- F Mounting holes on front
- B 1/4" Bleed Ports
- OX O2 Clean

Notes:

1. -F front mounting available on models T, HK, F, FM, N & S. -R bottom mounting available on models F, FM, N & S.
2. -P & -Q are available on 2 & 3 valve models T, HK & S. P is a blind plug, Q is a bleed plug.
3. Manifold Type 'C' is suggested for 3 valve coplanar style as bleeds are available (unavailable on 3 valve F type).
4. Manifold Type 'D' is suggested for 2 valve coplanar style as bleed is standard on this style.



Dynamic Controls & Sensors, Inc.
P.O. Box 5009
Kingwood, TX 77339
voice: 281-812-9844 Fax: 281-812-9845
www.precisionvalves.net
sales@precisionvalves.net